



Colegio y Asociación Mexicana de Patólogos, A.C.  
Sesión Mensual Reglamentaria, Agosto 2020  
DRA. DAFNE THAMARA AYALA DÁVILA  
daf\_tham@yahoo.com.mx

# Resumen clínico

- Hombre de 69 años.

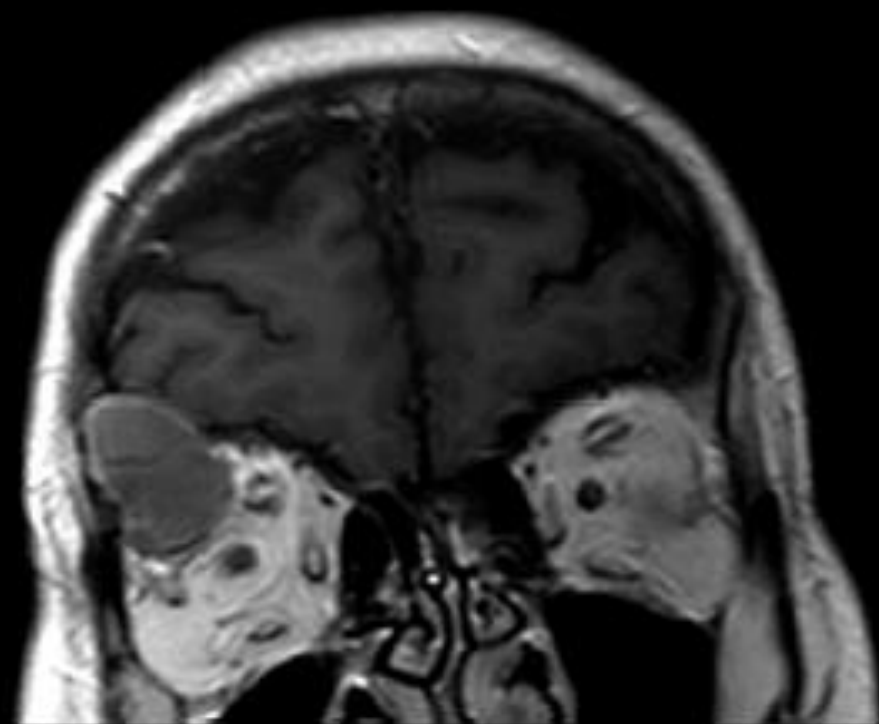
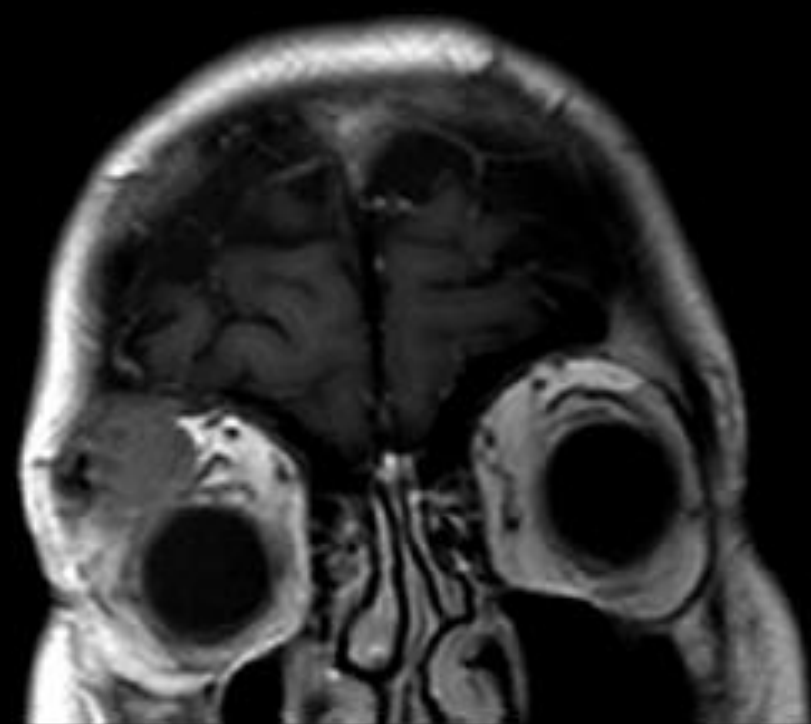
- Sin antecedentes de relevancia.

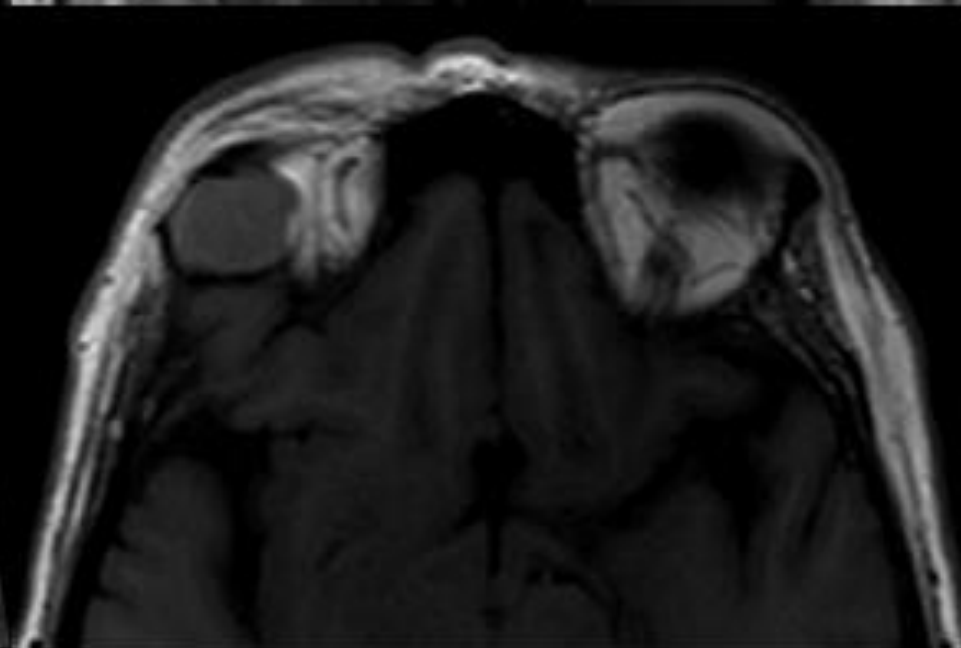
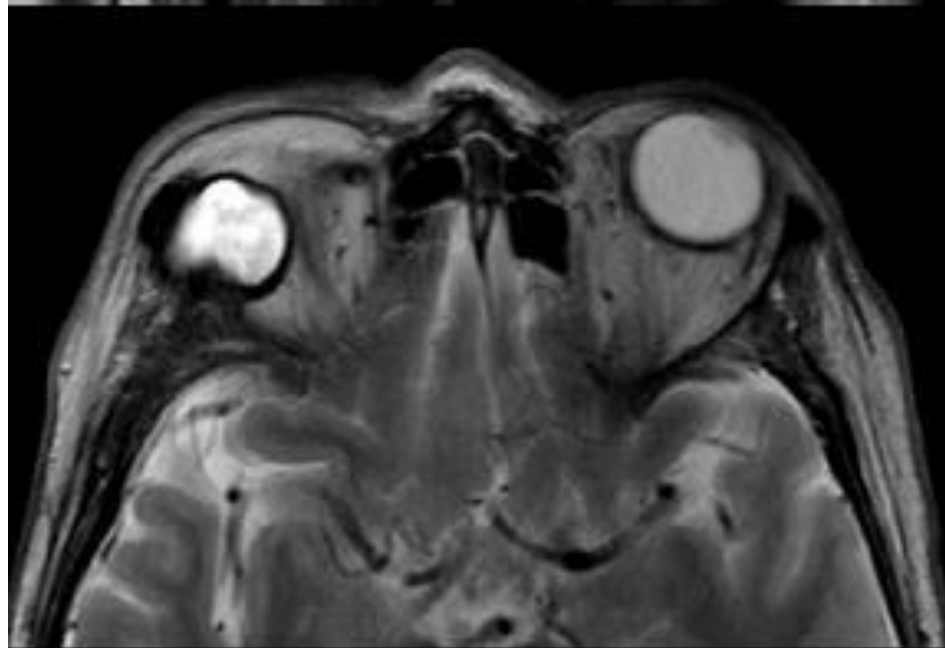
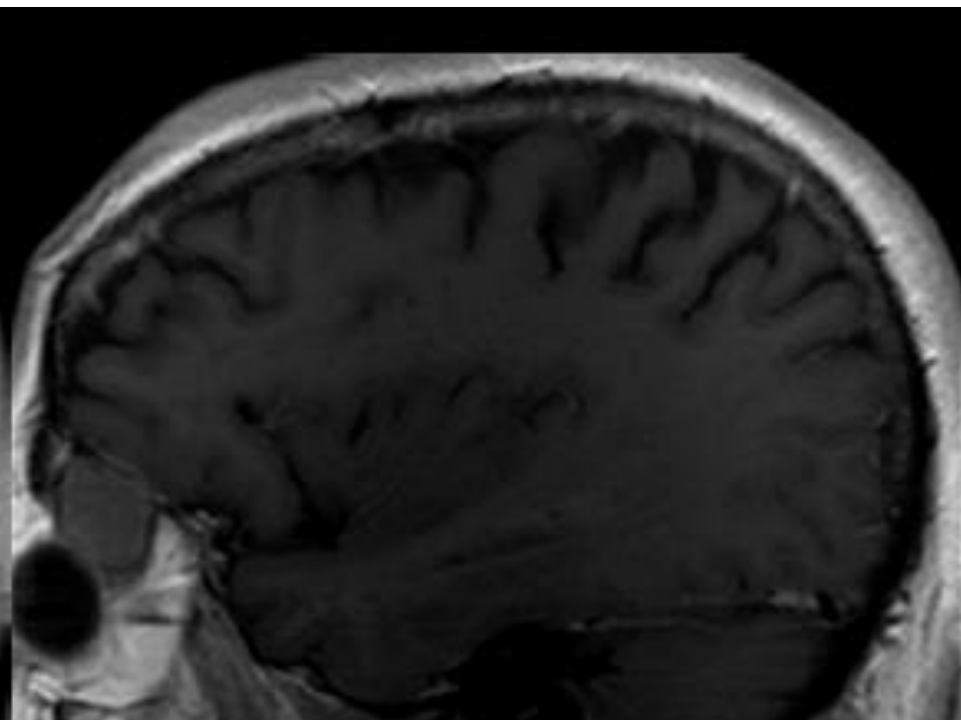
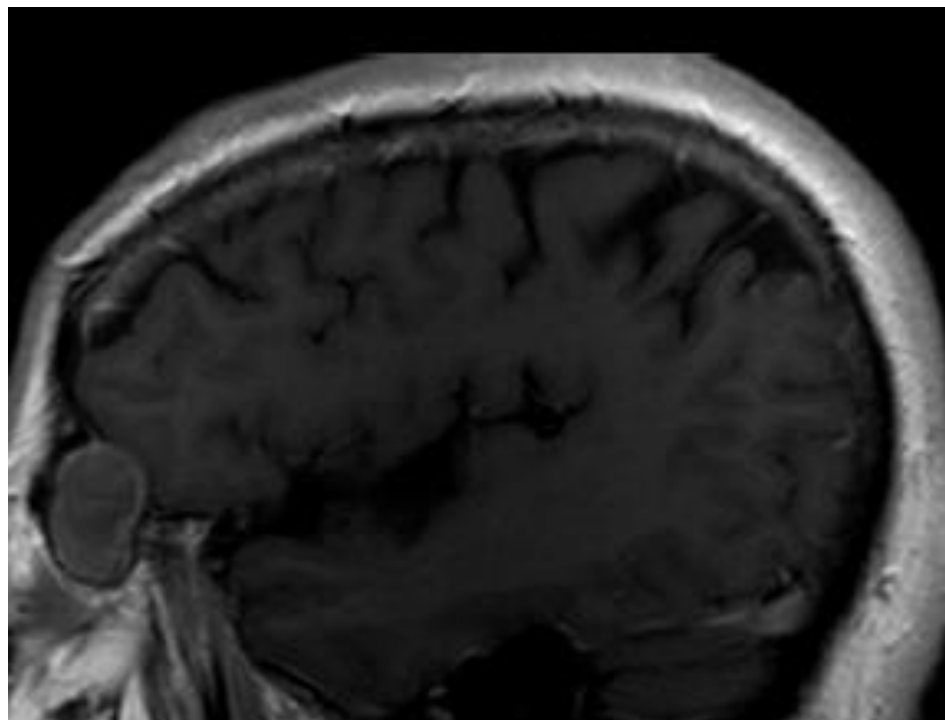
- Trauma y enfermedades crónico-degenerativas negativas.

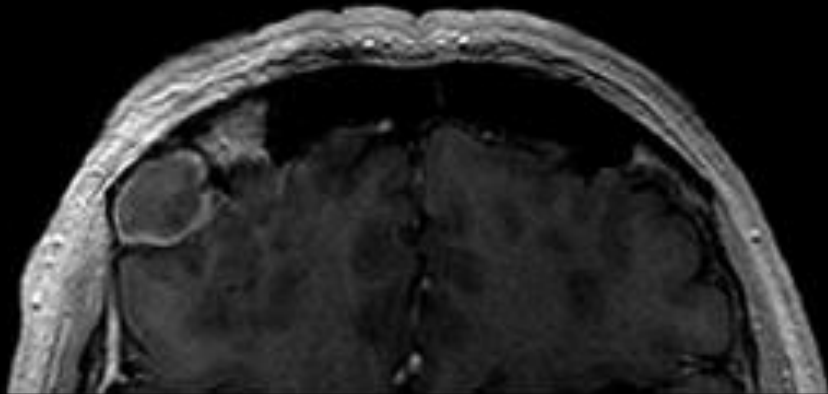
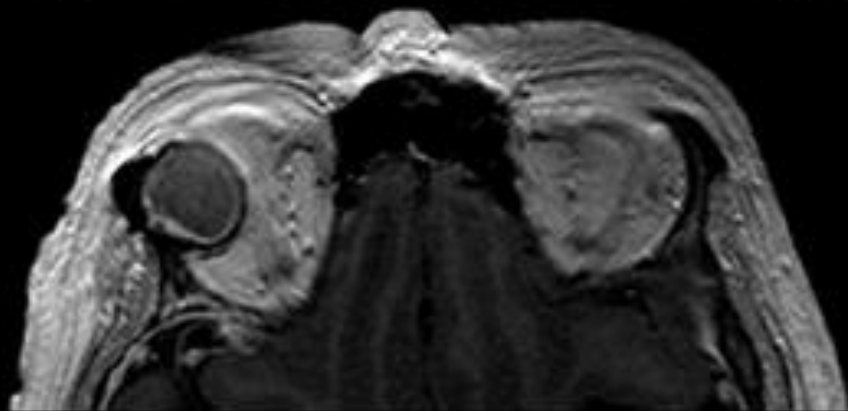
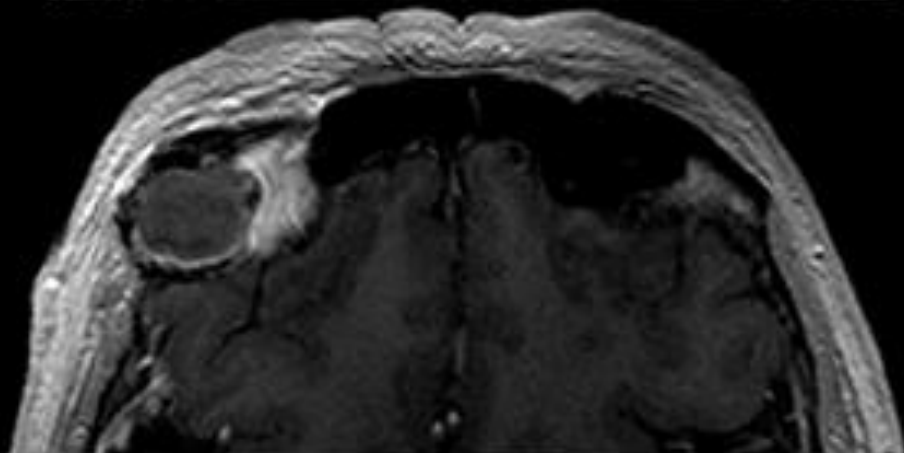
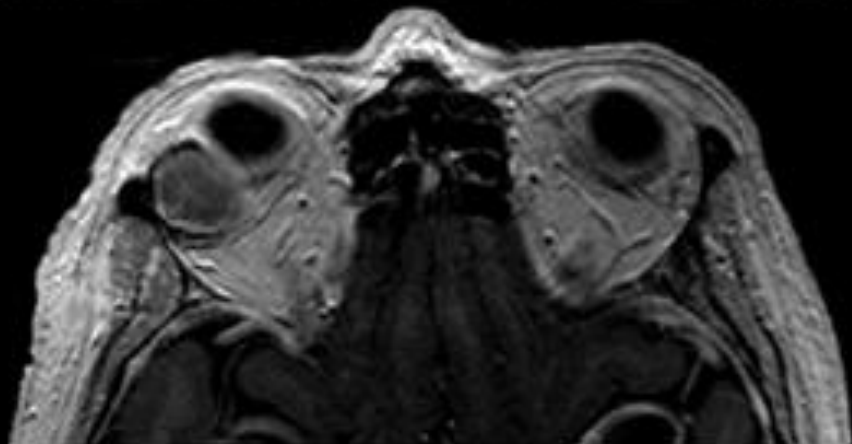
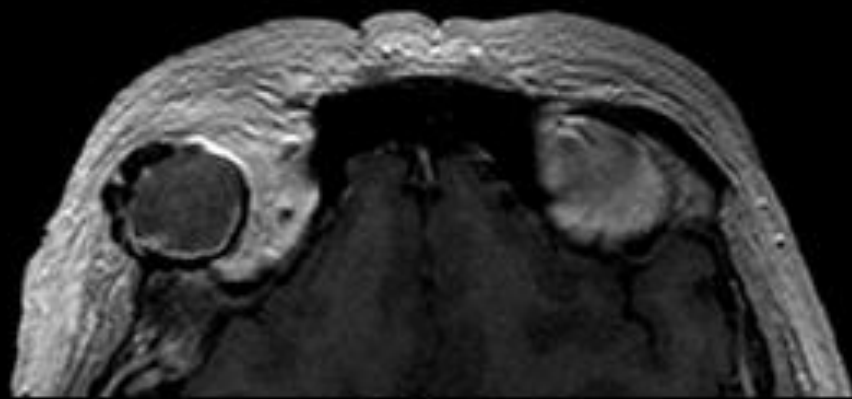
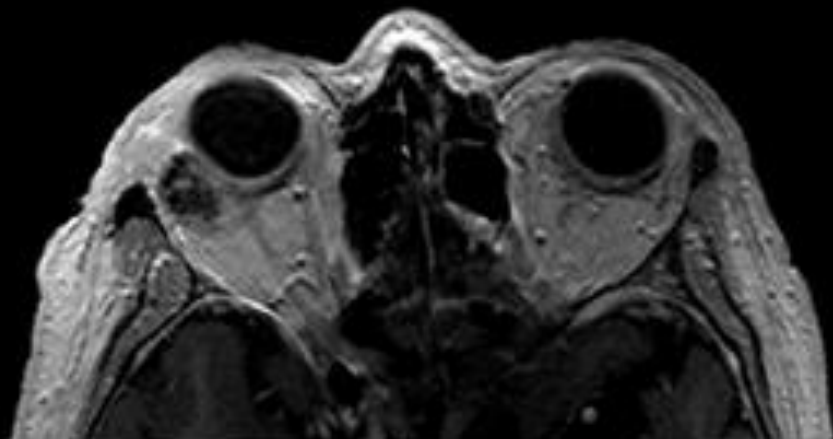
- El padecimiento actual inició seis meses previos con hiperemia de conjuntiva y epífora progresiva derecha.

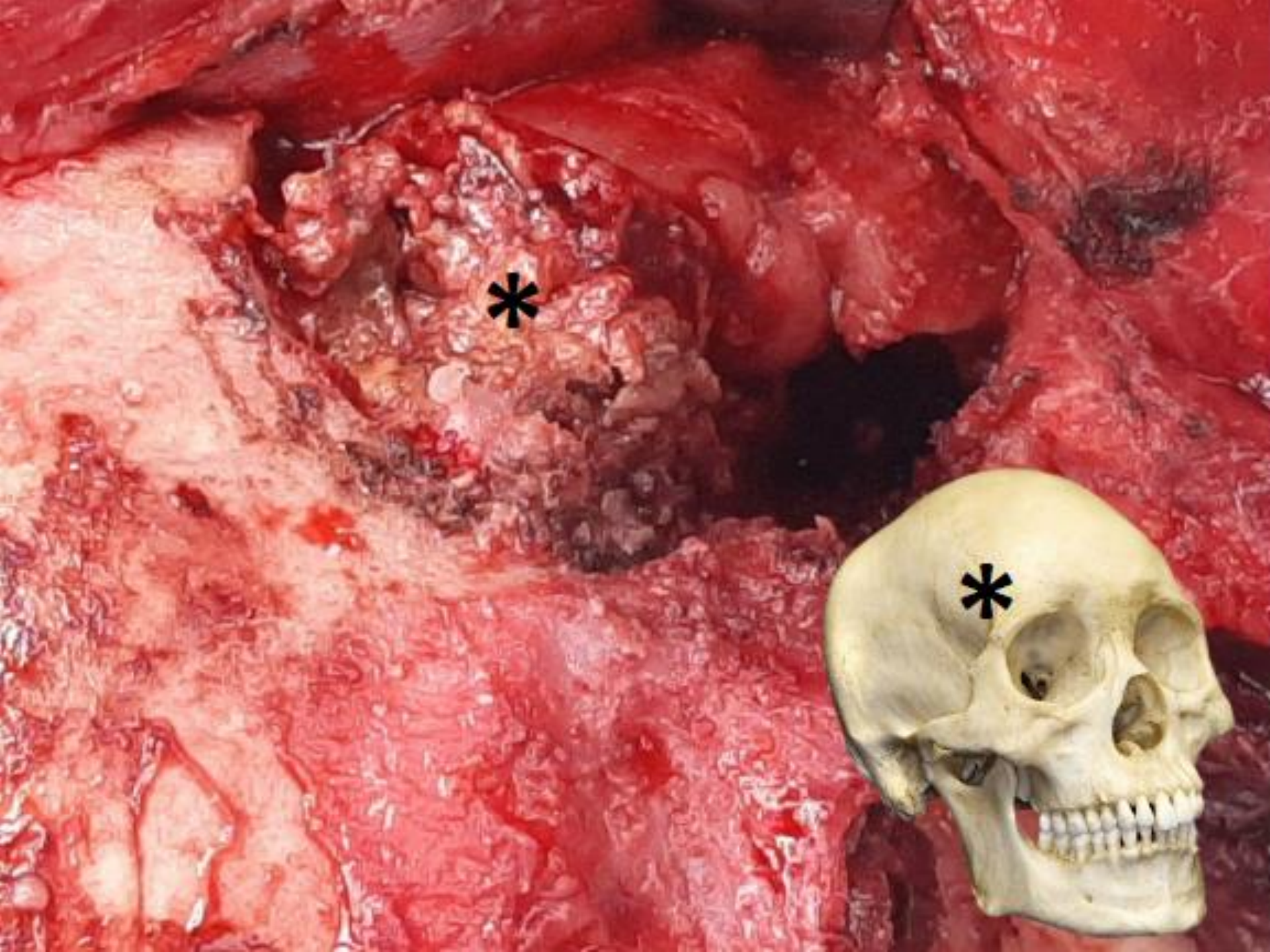
- Tiene enoftalmo/descenso derecho e imposibilidad para la abducción. No hay déficit visual ni campimétrico.

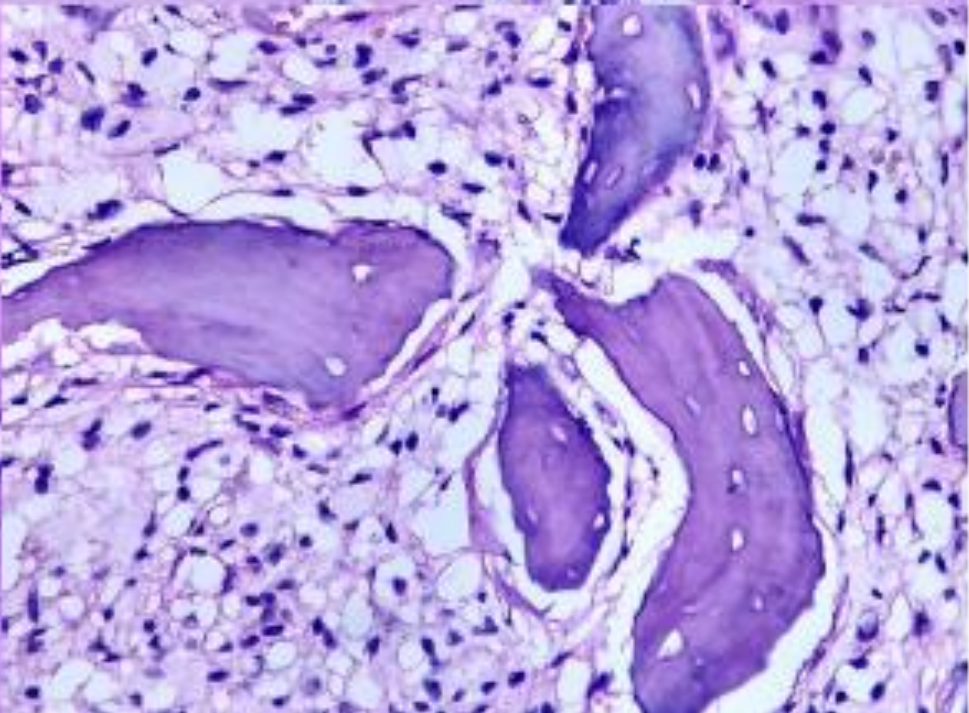
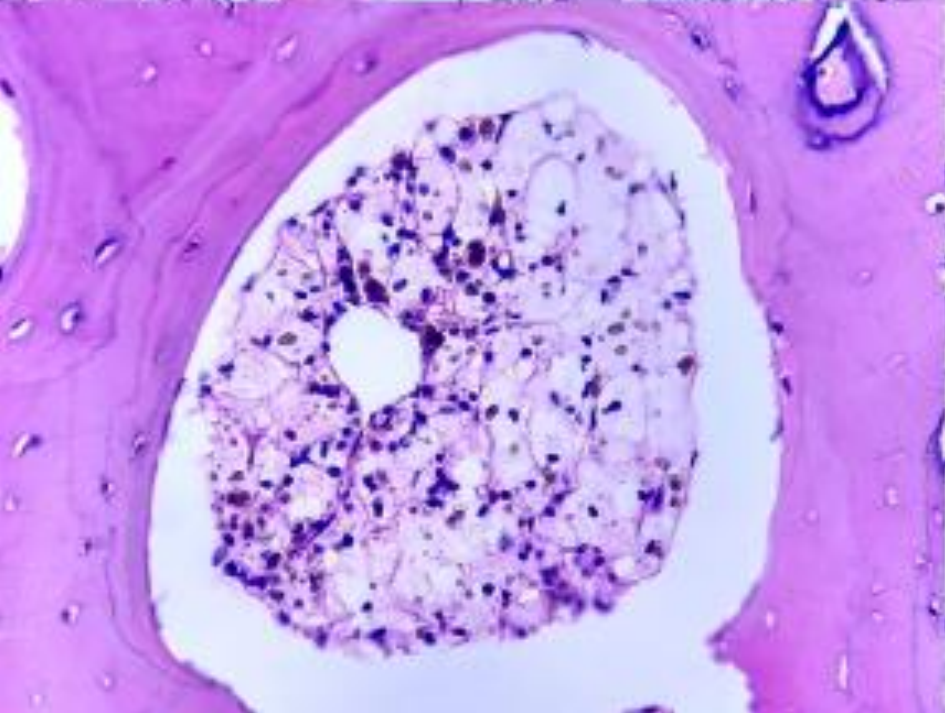
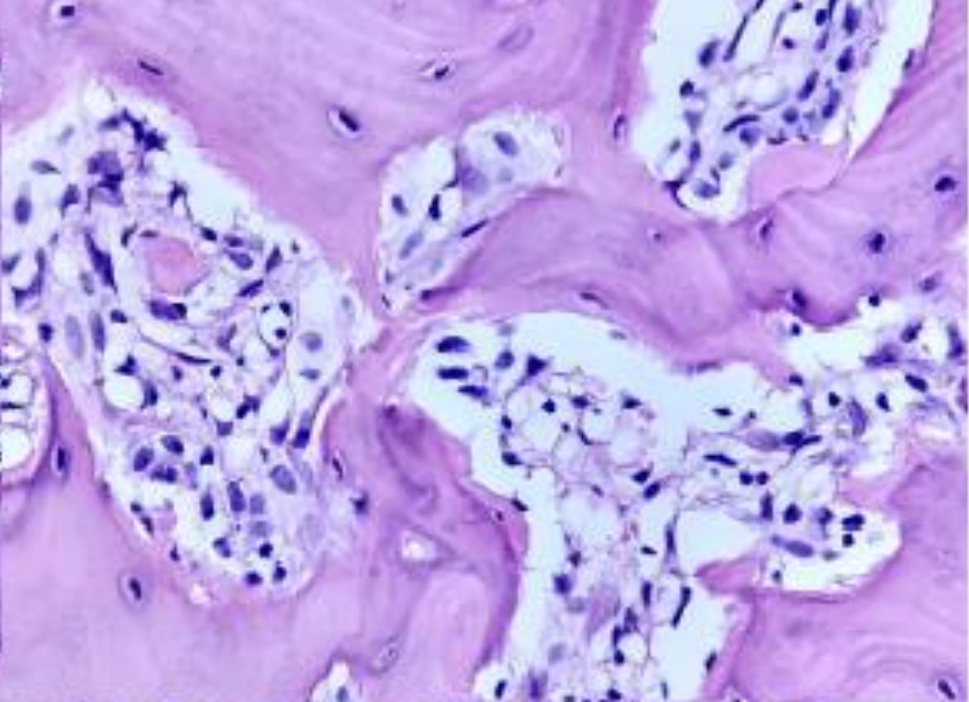
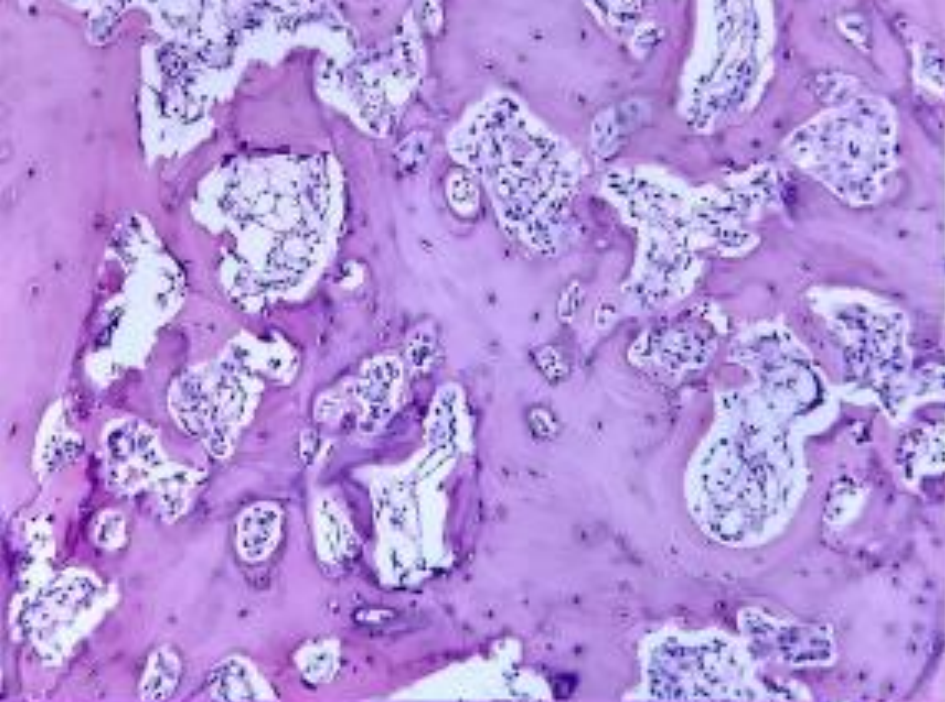


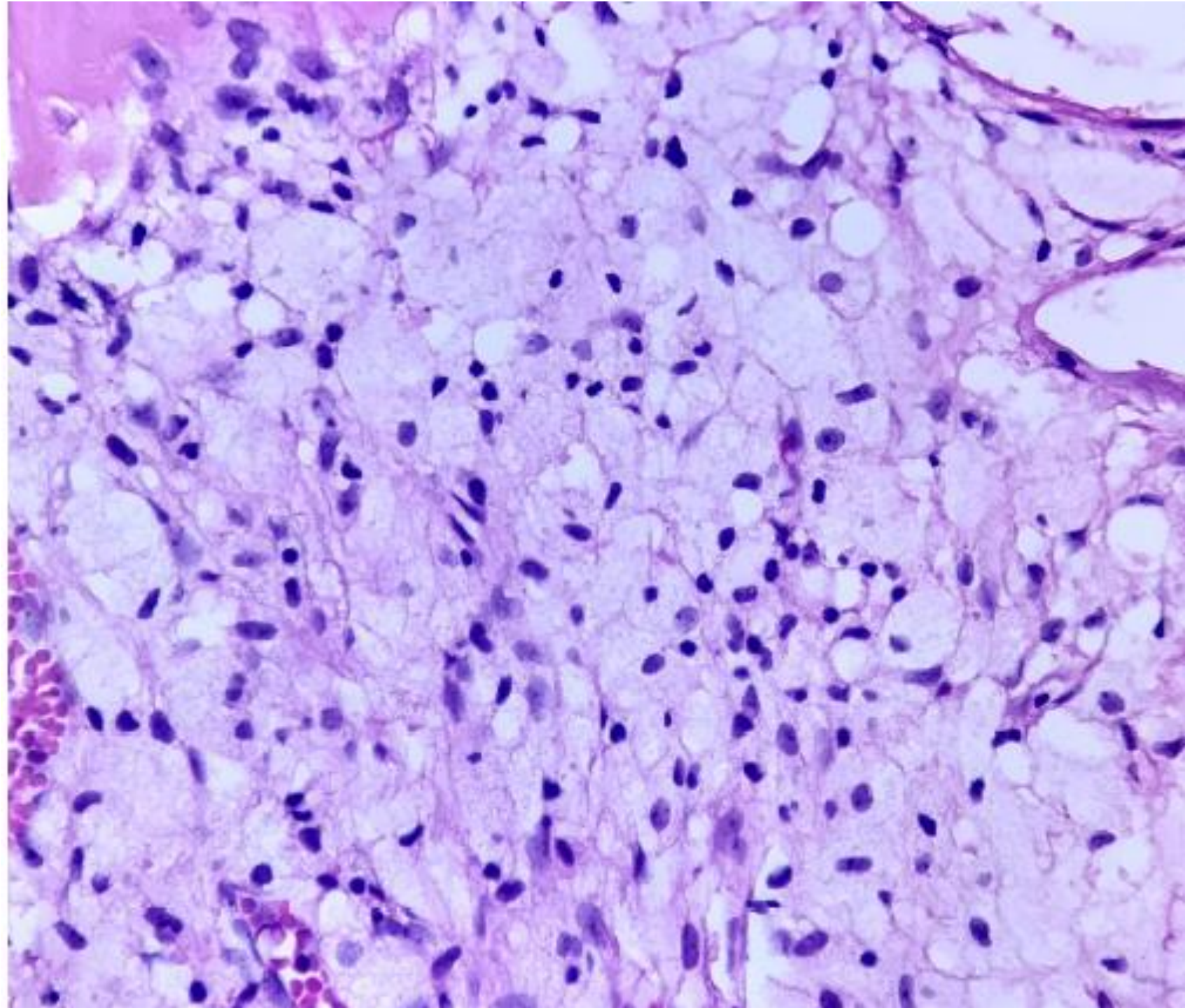


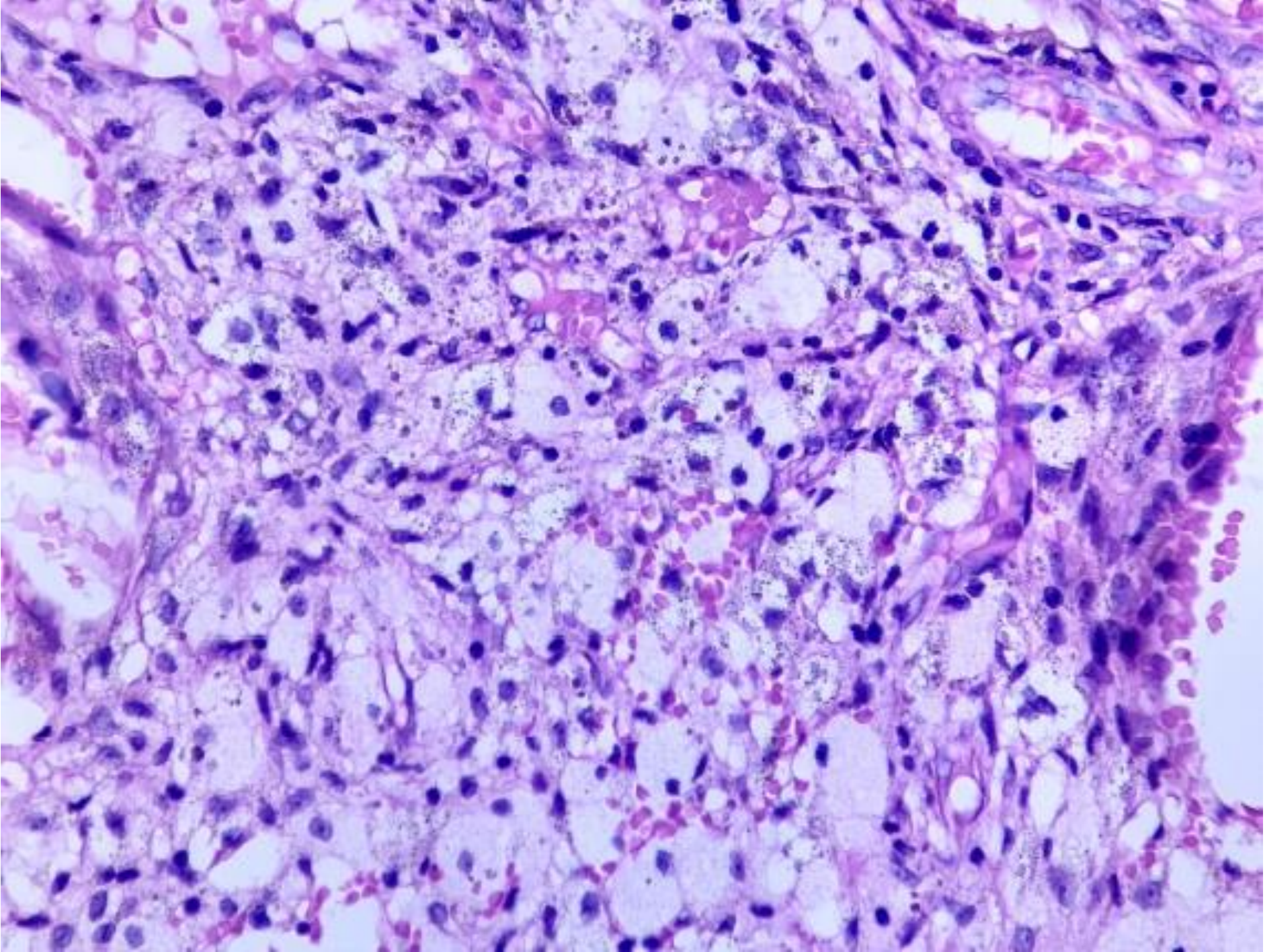


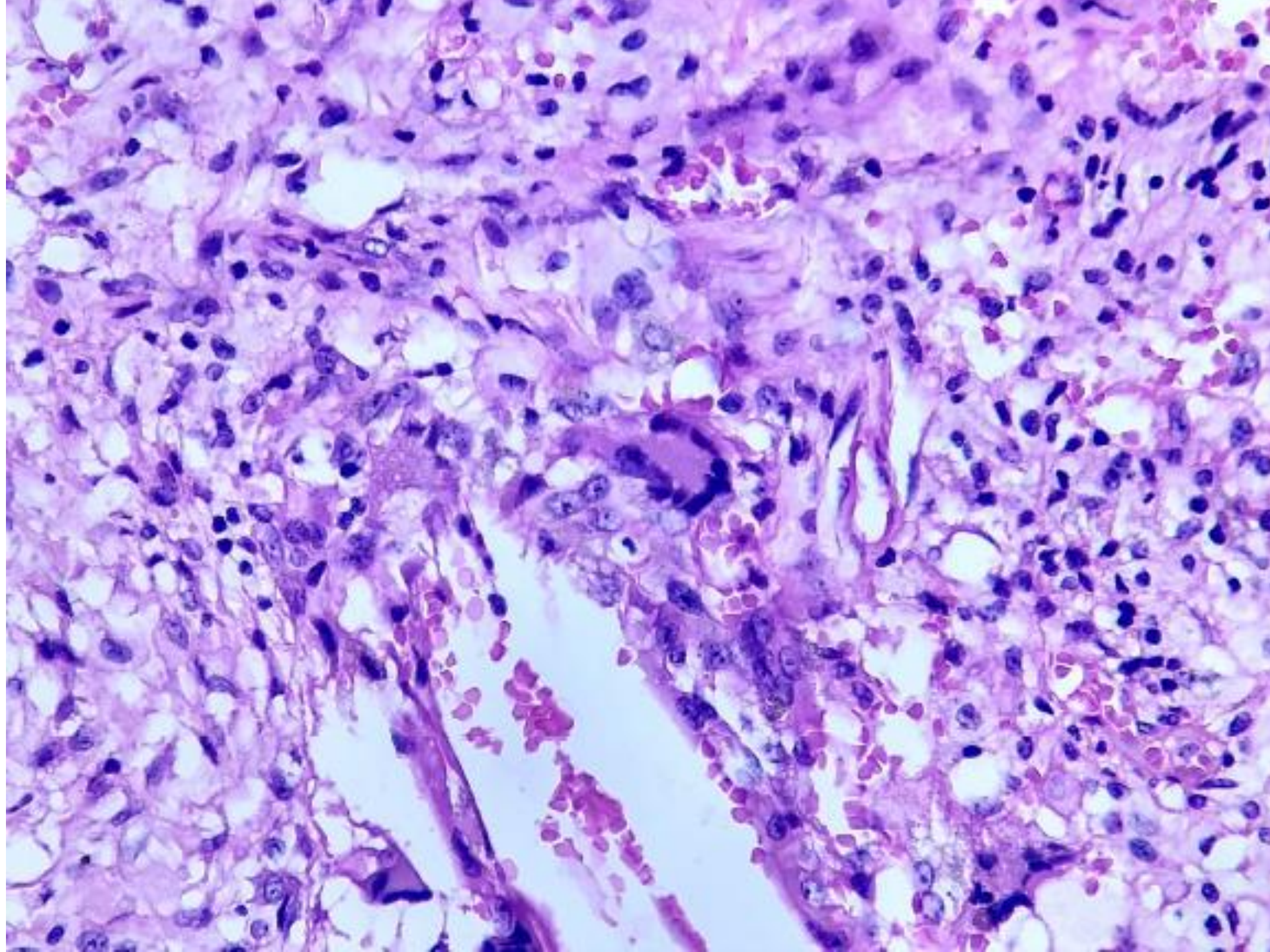


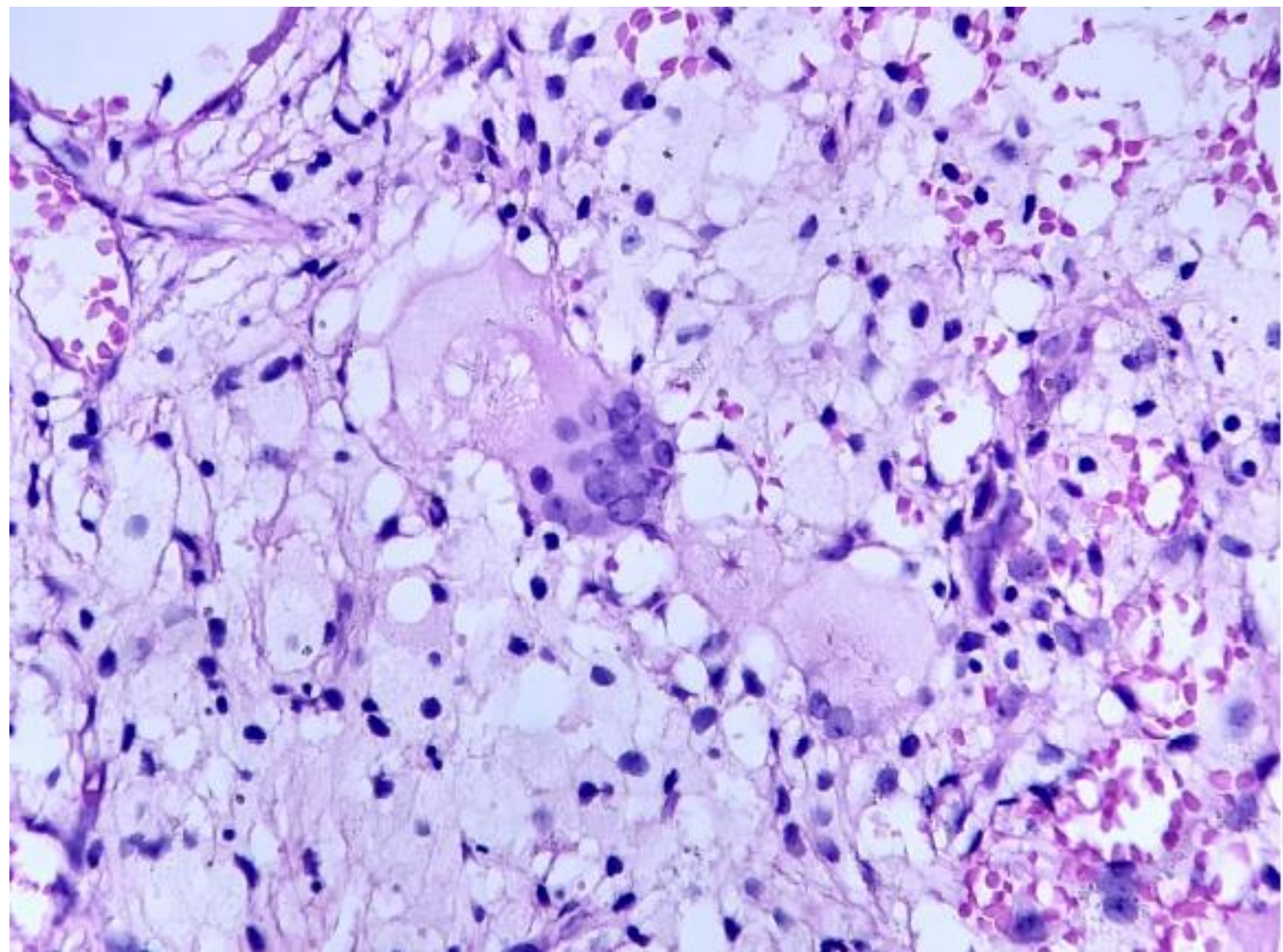


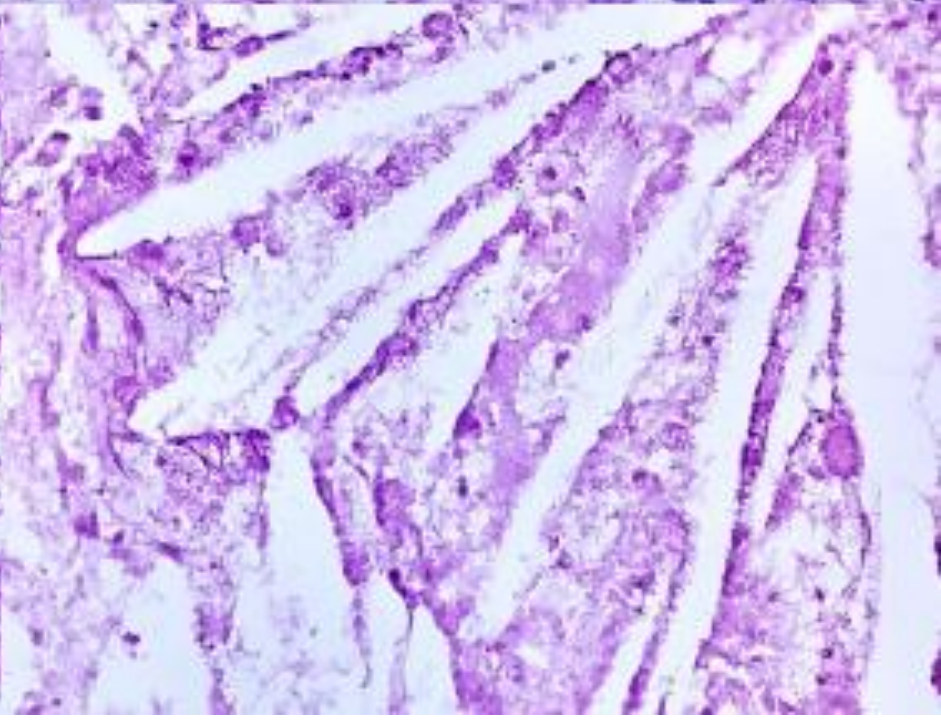
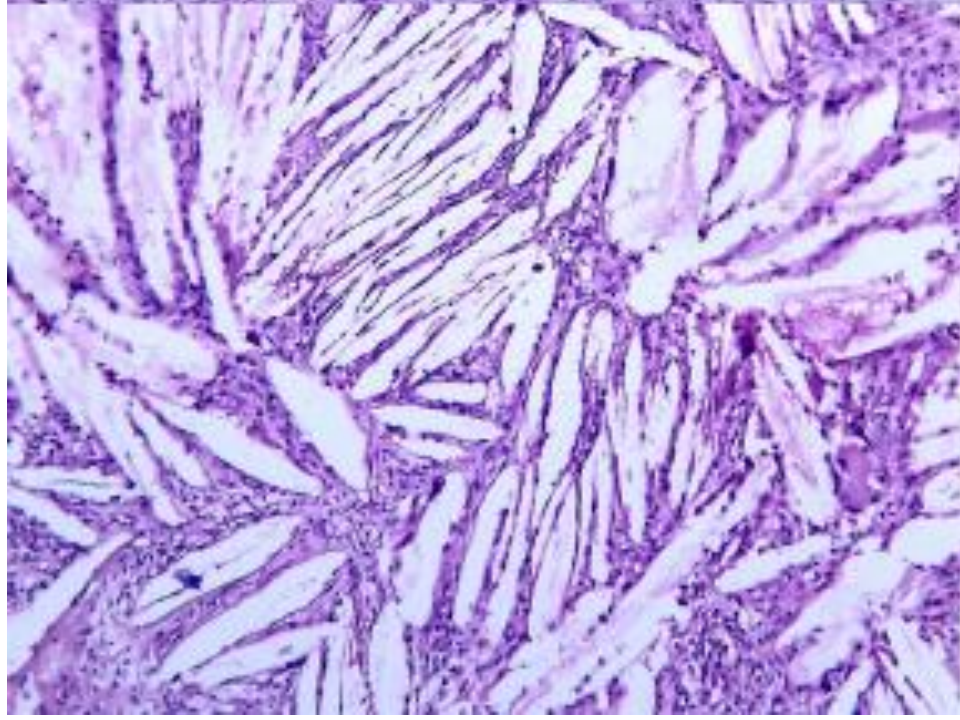
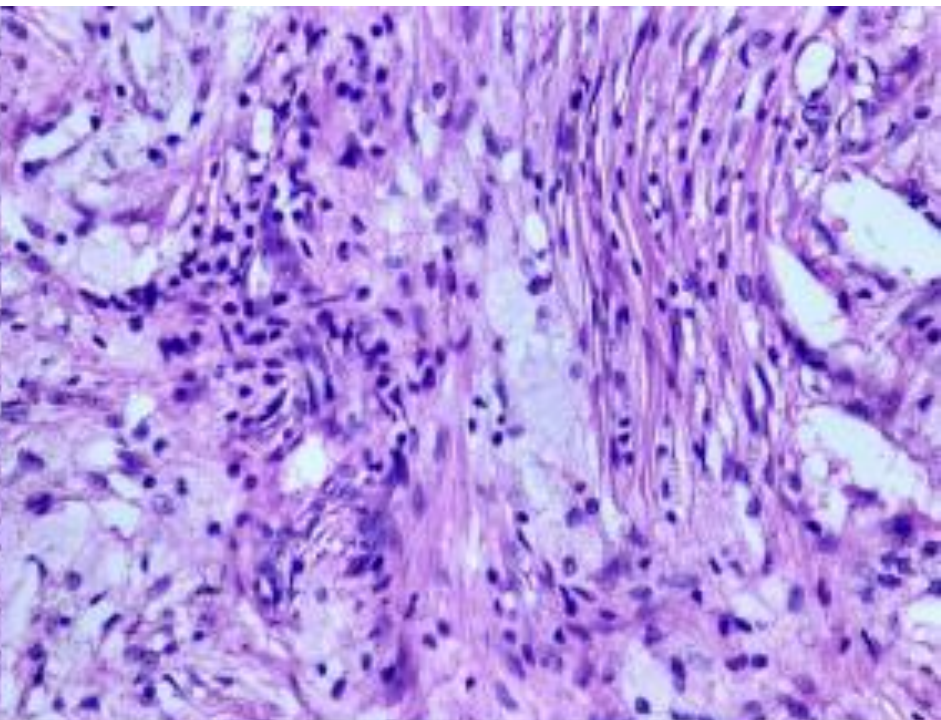
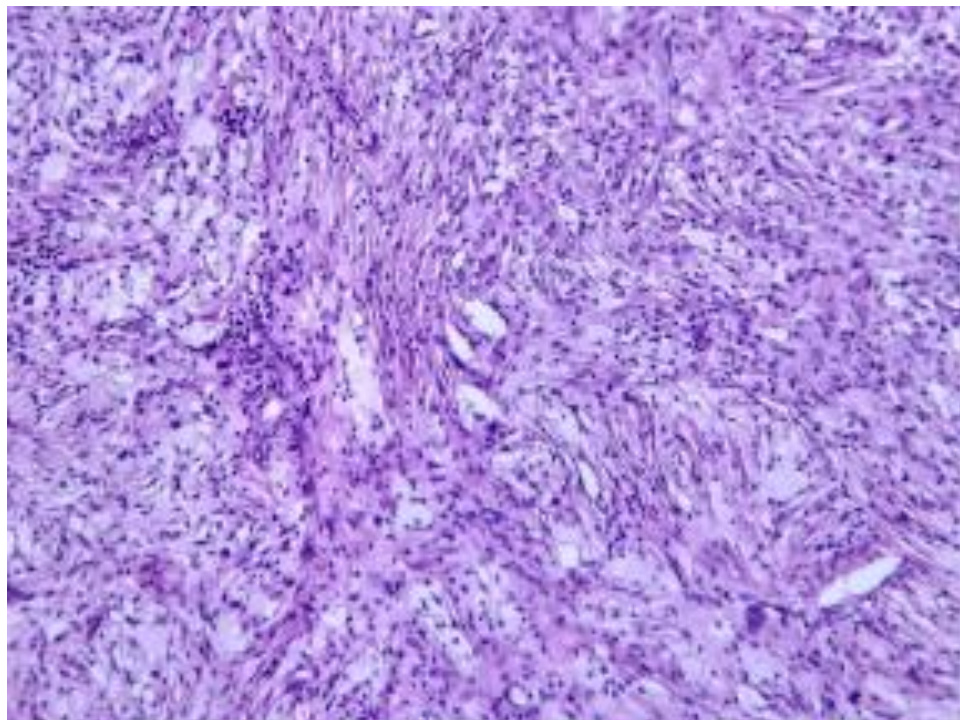














---

HOSPITAL REGIONAL  
ALTA ESPECIALIDAD

---

I X T A P A L U C A

“EXCELENCIA MÉDICA AL  
SERVICIO DE MÉXICO”



## Pregunta 1

Diagnóstico:

- a). Meningioma
- b). Carcinoma metastásico
- c). Micobacteriosis
- d). Enfermedad xantogranulomatosa

## Pregunta 2

Inmunofenotipo en la enfermedad de Erdheim-Chester

- a). Receptor 2a de somatostatina +
- b). CKAE1/AE3 +
- c). BRAFV600E +
- d). CD1a +